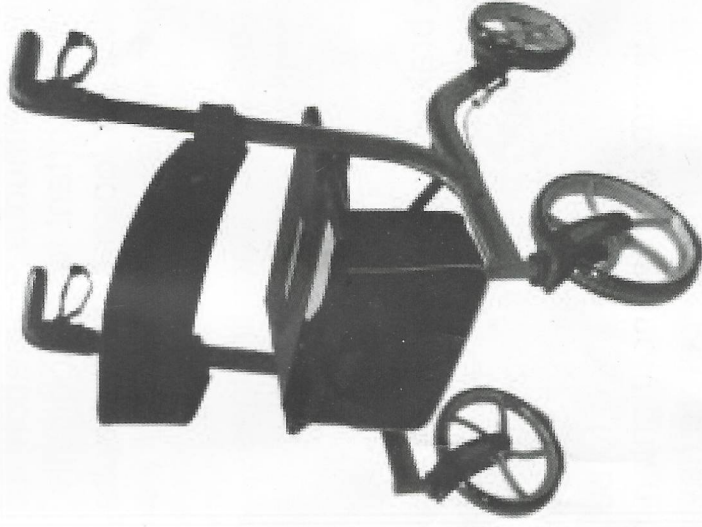


Rollator Model #R110



Thank you for your purchase!

This Rollator is engineered and designed with durability and easy maintenance in mind. The R110 model has great indoor and outdoor maneuverability, and weighs only 16 lbs!

It is easy to fold, great for transporting, and takes little room to store. It's large 10 inch front wheel provides extra stability and has a built-in seat for resting for when you get tired from walking. Please read through this manual and get acquainted with your Rollator before using.

Maintenance

With routine use, nuts and bolts on the wheels, seat platform and backrest can become loose. To ensure safe continuous operation of the your rollator, it is important to periodically inspect the product for loose nuts and bolts and retighten as appropriate.

Periodically inspect the castors tightness, wear, and check for damage. Make sure that the wheels. Are free of hair, lint, and other debris.

Always test the brakes by squeezing the brakes while walking, by stopping and pushing the brakes to a locked position, and then try to push the rollator to ensure the brakes are working. If the brakes do not lock the wheels, the brakes need to be adjusted. If the adjustment does not tighten the brakes, DO NOT use the rollator before having the brakes repaired.

Use soapy water and a soft cloth to clean the surface of the walker. Wipe off any excess moisture after cleaning. Using abrasive clothes or other products can cause damage.

Place the walking aid a bit in front of you and take a step towards it while using the hand grips for support. Be careful if the wheels stop against any obstacle.

When sitting, apply both parking brakes to prevent the rollator from rolling. * Place both feet firmly on the ground and do not lean backward or sideways.



With our ultra compact design, our walker could be easily folded up by pulling the seat grip up with one hand!

Safety

Precautions

- Do not operate this Rollator until you have read and fully understand this manual.
- Do not operate this Rollator until its fully checked and assembled.
- Do not leave this Rollator unattended without locking the brakes.
- Do not use the rollator to pull yourself up from a sitting position.
- Do not use this Rollator as a seat in any type of motor vehicle.
- Do not stop on a grade or a ramp.
- Do not exceed the weight limit of 300 lbs or a serious injury could result.
- Do not store this product at extreme temperatures ($<0 \geq 40^{\circ}$).

When traveling up and down on an incline:

- Do not make sharp turns.
- Do not turn or reverse on an incline. (maximum 10% incline)
- Apply the brakes when needed while walking to maintain speed and control.

When sitting on the Rollator:

- Do not sit on the rollator without applying the parking brakes.
- Place both feet firmly on the ground.
- Do not lean over your Rollator for any reason.
- Never sit and push the rollator with your feet.

Unpacking

Dispose of the removed packaging at your local recycling center. Discard the wrapper and box separately. Dispose of the end-of-life item at a clean point.

Operation



Go slowly to start and progress up to a normal walking speed. Squeeze both brake handle loop levers to slow or stop.

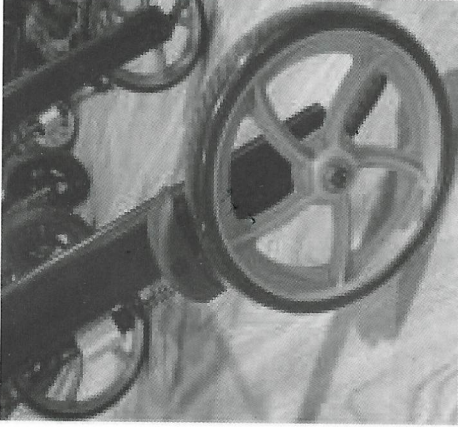


To apply parking brakes(BLUE):

Simply push down both brake handle loop levers firmly in a downward direction until they click into place.

To release parking brakes(RED):

Squeeze to unlock parking brake in an upward direction.

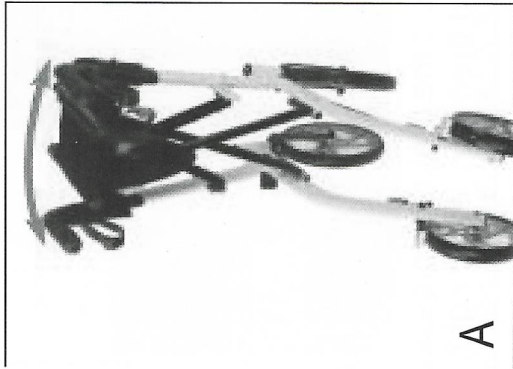


To adjust the braking strength, adjust the brake by pressing the screw housing downwards and then turn left or right.

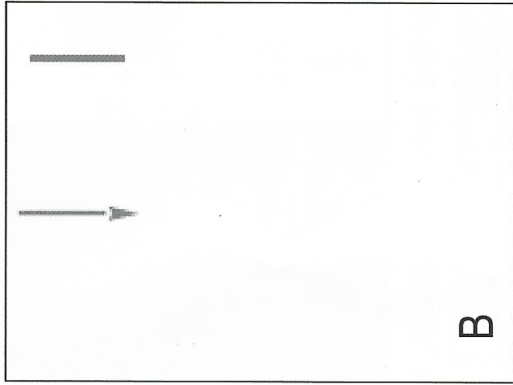


Turn the adjustment screw to give a space between the aluminum brake pad and the tire then test the tension. The pressure of the brake mechanism on the brake wheel should be enough so that, when the brake lever is in the fully squeeze position, the brake wheel does not turn but is not too tight.

Assembly

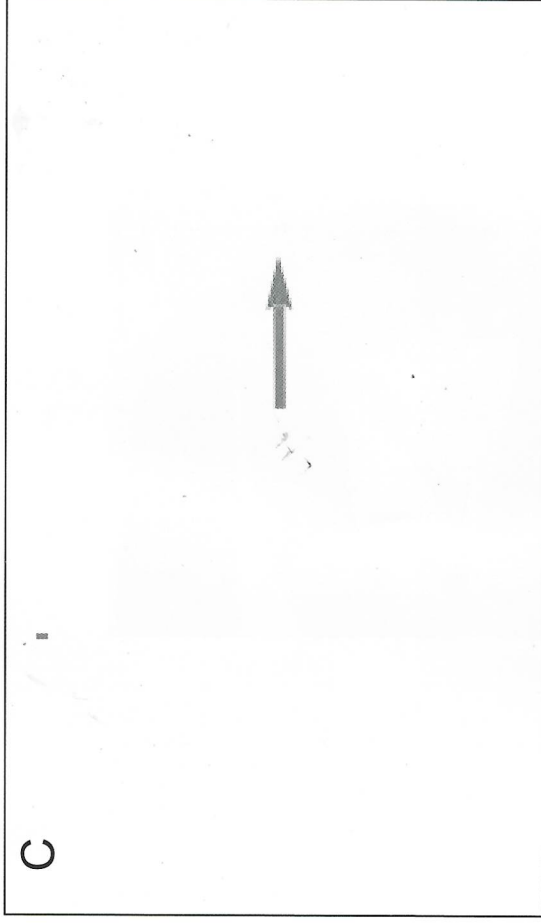
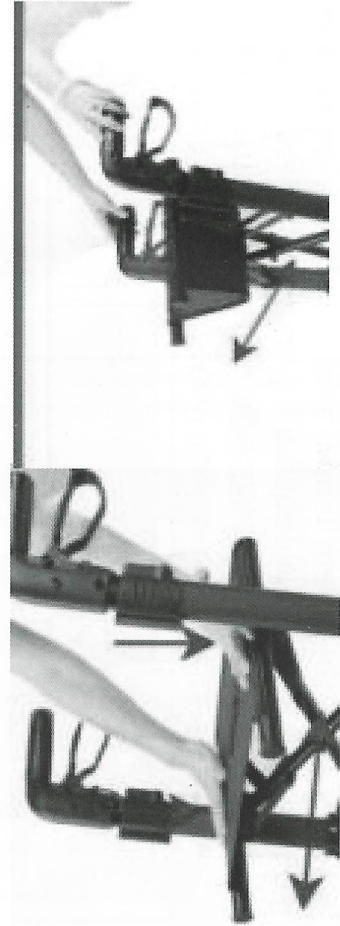


A



B

Remove the rollator from the shipping carton and unfold the frame as shown(A). Push down on both end of the seat tubes to open the frame(B). Make sure that the trolley seat tube falls on both sides of the receptacle guide. The unit is now rigid and stable with the seat flat and level with the ground.

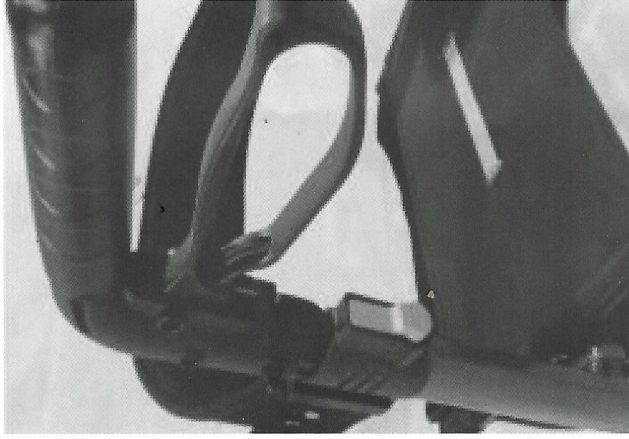


C

Locate on the front side of the rollator the two extended tubes at the top of both ends of seat cross bar. With the zipper side of the pouch facing up locate the two loops on both ends of the pouch(C). Slide the two end loops on the pouch onto the extended tubes and over the end caps to hold(D).



D



Handle height can be adjusted in one inch increment from 33 1/2" to 38 1/2."

To adjust the height of the Hand Grips-

Press the locking pins on the outside of the frame beneath the grips in. and push / pull the grip to the desired height until the pin clicks back into place in another adjustment hole. Make sure both grips are adjusted to the same height.

Note: The handles should usually be positioned at wrist height. Therapist may suggest different heights depending on specific needs of the client.